



OCEANIA CRUISES®

THE RE-INSPIRATION
OF CLASSIC
Elegance

THE Life™ DIFFERENCE

- The Finest Cuisine at Sea™
- A variety of distinctive open-seating restaurants, *all at no additional charge*
- Gourmet cuisine curated by world-renowned Master Chef Jacques Pépin
- Epicurean enrichment programmes, including immersive Culinary Discovery Tours™ in the world's most fascinating destinations
- Award-winning itineraries featuring more than 450 alluring destinations
- Spectacular port-intensive voyages featuring overnight visits and extended evening port stays
- Intimate, luxurious ships catering to just 684 or 1,250 guests
- Exceptional personalised service
- Elegant casual ambiance, no jacket or tie required
- Acclaimed Canyon Ranch® Spa





REGATTA CLASS

RE-INSPIRING A *classic*

In a comprehensive re-inspiration, *Insignia* has transformed from chrysalis to butterfly, essentially becoming an entirely new ship. Decidedly more unique and a dash more elegant, *Insignia* still retains the intimacy and comfort that makes her so beloved. Every suite and stateroom sports new surfaces, while in the public spaces, handsome new furnishings and fabrics play host to a reinvigorated colour palette of muted sea and sky. From Martinis' wall of bespoke artwork and The Grand Dining Room's hand-blown Italian chandelier to the Grand Staircase's verre églomisé glass wall, *Insignia* has been tastefully rejuvenated. Renowned for a culinary experience second to none and an award-winning staff that is dedicated to meeting your needs with subtle grace, *Insignia* now boasts an aesthetic that celebrates her timeless personality.





A Grand Welcome Awaits

The moment you step aboard, you'll lean into *Insignia's* warm and sophisticated embrace. The Upper Hall speaks to your finer sensibilities with an effortless style layered with furnishings from Baker and Donghia, fabrics from Rubelli and Kravat, and a reassuring but contemporary colour palette of crisp linen, soft blues, restful creams and bold charcoals. The Grand Staircase's intricate new balustrades are inset with crystal accents echoing the brilliance of the opulent chandelier above, which serves as a captivating focal point. Commissioned from Gorman Studios, a Canadian arts atelier guided by renowned global artists, a dramatic verre églomisé wall rises behind the Grand Staircase, its delicate tree-inspired theme symbolizing prosperity and strength, a noble reflection of both *Insignia's* soul and the aspirations of her guests.

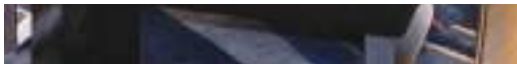




ILLUMINATING PAST & PRESENT | Inspired by the traditional tiered forms of elegant lighting fixtures of the past yet fused with a contemporary aesthetic, the radiant custom-designed chandelier which defines the very heart of *Insignia* is a wonderful reflection of both the comfortable surroundings that have enchanted our past guests and the vision of elegance that defines future desires. In our quest to make our ships a home away from home, the chandelier is reminiscent of a lighting installation in a grand seaside estate. The design aesthetic is ever mindful of its surroundings, reeded elongated glass elements providing a harmonious nod to the redesigned balustrades on the Grand Staircase. Much more than a chic source of illumination, the *Insignia's* chandelier is emblematic of the fresh, new look of *Insignia* herself.



SEA OF GLASS | Underlying every Oceania Cruises journey is the ever-changing majesty of the sea, from its myriad shapes and fascinating creatures to its vivid kaleidoscope of colours, luminescence and moods. A hand-blown glass wall, representing the distinctive silhouette of barnacles and the wondrous diversity of sea life, captures the attention and imagination of all those who slip into the comfortable cocoon of Martinis. Artist Michael Skura was specially commissioned to create this artwork, lovingly crafting each unique piece of glass in his California studio and personally installing every element himself. You'll quickly learn that the care and attention to detail that the artist took with his installation on *Insignia* is representative of the same fastidious planning and passion which inspires our prescient staff to attend to your every whim and desire.





Your Private Club

Like a private club, Martinis is the social hub of *Insignia*, a convivial gathering spot for like-minded travellers to share a cocktail or a story among staff that quickly become family. Manifesting Oceania Cruises' philosophy of imbuing its ships with a luxe residential feel, Martinis' elegant rejuvenation features custom-milled carpets underfoot and a complexion unabashedly inspired by the stunning coastline of Santorini. Deep Grecian blues and volcanic sienna tones dance playfully with rich chocolate browns and stately pewter, while the welcoming bar's tobacco quartz and pearlescent, smoky white marble accents play off Martinis' beloved walnut panelling. The room's every facet has been lavished with attention and each nuanced shade painstakingly chosen to create an inviting room with an ambiance as affable and sophisticated as our guests.





A Worthy Stage

The world's finest performances call for surroundings that uplift audience and performers alike. With a sweeping set of refurbishments, The Grand Dining Room rises to the occasion as the ultimate showcase for Oceania Cruises' celebration of the culinary arts. The inviting room's dazzling centrepiece is a show-stopping crystal chandelier designed by acclaimed Studio DADO, featuring hand-blown teardrops of Italian glass that cast a warm glow across elegant new carpeting, fresh window coverings, Rubelli fabrics and tables meticulously set with Riedel crystal, Versace china and European flatware. With anticipation of the delights to come, sink into a buttery-soft dining chair, caressed by the soft touch of cream-hued leather intertwined with elegant yet playful bronze threading, and wait for the curtain to rise on gustatory perfection.





REDEFINING THE ART OF CUISINE | Great art is born of creativity, fueled by imagination and shaped by the quest for perfection. At Oceania Cruises, our chefs are true artists, hand-selected from only the finest restaurants for their unique culinary wizardry. Our cuisine is our art, a tangible and savoury expression of who we are, and our joy is the ability to share our creations with you. Whether in The Grand Dining Room or one of our complimentary speciality restaurants, our focus has been further enhanced with artisanal local ingredients and curated regional wines. Discover an array of artfully re-imagined dishes that are at once both familiar and innovative, all of which paint a picture of the diverse and legendary regions in which we sail. Indeed, the art of gastronomy is reflected in our unwavering dedication to presenting The Finest Cuisine at Sea™.



SECRETS OF THE ULTIMATE OLIVE OIL | The lifeblood of genuine Italian cuisine is the perfect olive oil, and at Oceania Cruises we looked inward for the solution, consulting our chefs and listening to our guests in our quest to identify the ultimate olives. The glorious result is our exclusive Grove 45 Extra Virgin Olive Oil. Springing from organically farmed trees, Grove 45 blends Frantoio, Leccino, Maurino, Pendolino and Nocellara del Belice olives whisked from field to press within 24 hours. Our delightfully balanced oil is guardedly robust and boasts wonderfully fruity, grassy and peppery qualities suggestive of acclaimed Tuscan blends. Scrupulous care is evident even in the bottle, forgoing glass for brushed aluminium that protects the oil from UV rays, thus sustaining its flavour until it fulfils its ultimate culinary purpose.





A Taste of Tuscany

Toscana celebrates Italy's culinary passion and the marvellous evolution of its rich family traditions, with some of our most cherished recipes featuring a direct lineage from the mothers and grandmothers of our own Italian staff. This same authenticity motivated our design choices, whose inspiration is drawn from the quintessential Tuscan villas adjacent to the bountiful olive groves we surveyed in our quest to create the ideal olive oil. Deep ruby reds celebrate the fiery sunsets that wash across Tuscany each evening and accent warm, rustic browns evoking San Gimignano's medieval towers as they glow in the afternoon light. Even the deep milky-coloured leather chairs pay homage to the Chianina cattle of the region, a small touch perhaps, but one which exemplifies our commitment to honouring the essence of Italy.







SUITES & STATEROOMS

COMPLETE TRANSFORMATION *of comfort & style*

Perhaps the greatest joy in *Insignia's* stem to stern rejuvenation is the re-inspiration of her 342 suites and staterooms. From the grand to the sublime, every surface has been renewed with the residential feel of a contemporary Newport cottage, chic Parisian apartment or sleek Amalfi villa. Bathrooms sparkle with a new radiance and wall coverings are so alluring you're compelled to run your fingertips across their surface. Surround yourself with every possible amenity, from the addition of thoughtfully-placed USB ports to voluminous closets redesigned for today's traveller. Your soul soars amid a lighter, brighter colour palette that explores the nuanced shades that distinguish sky from sea, silvery greys and greens living in harmony with dramatic sapphires and taupes. Sophistication abounds, but comfort remains the order of the day.





The Pinnacle of Perfection

As the ultimate expression of our hand-selected designers' relentless drive for excellence, *Insignia's* Owner's, Vista and Penthouse Suites have taken on a new luster. Grand and opulent yet also inviting and familiar, our spacious suites exude a casual residential confidence accented by designer fabrics, bespoke carpets and custom light fixtures. Carrara marble, polished European granite and silky onyx transform already capacious bathrooms into true sybaritic retreats with walk-in showers or indulgent soaking tubs. Encompassing the vivacious colours of the cerulean sky and emerald sea, living and dining areas play host to the ministrations of your punctilious Butler. Whether you dine alfresco on your revamped teak veranda or savour a succulent in-suite dinner served course-by-course, your suite is your private seaside holiday home, an airy, glowing retreat where your contentment and peace of mind are paramount.









A Haven of Indulgence

Retreat into a world redesigned with nothing but your comfort in mind, each detail attended to with the care of a Swiss watchmaker. Custom-crafted furniture begs for a few moments of your leisure while supple upholstered headboards crowning Oceania Cruises' exclusive Ultra Tranquility Beds invite you to relax in nocturnal bliss. Spacious but intimate, our staterooms feel larger, brighter and even more charming. Commodious closets incorporate a new storage system and bathrooms glisten with exotic stone cladding, sparkling new designer fixtures, sleek glass shower enclosures and lavish new vanities. Shimmering new light fixtures provide a solicitous mix of both direct task lighting and subtle, indirect illumination to create the warm ambiance that turns your sea-going haven into a home. In an undertaking once thought impossible, *Insignia's* staterooms have reached new heights of style, luxury and refinement.



Regatta, Insignia, Nautica & Sirena

SHIP SPECIFICATIONS

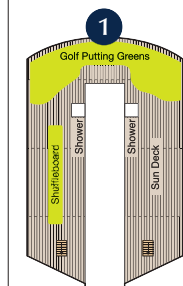
Re-Inspiration Dates: *Insignia* 2018; *Regatta & Sirena* 2019; *Nautica* 2020

Year Built: *Regatta & Insignia* 1998; *Sirena* 1999; *Nautica* 2000 | **Gross Tonnage:** 30,277

Length: 180.96 metres | **Beam:** 25.45 metres | **Speed:** 18 knots | **Guest Decks:** 9 | **Guest Capacity (Double Occupancy):** 684

Staff Size: 400 | **Guest-to-Staff Ratio:** 1.71 to 1 | **Country of Registry:** Marshall Islands

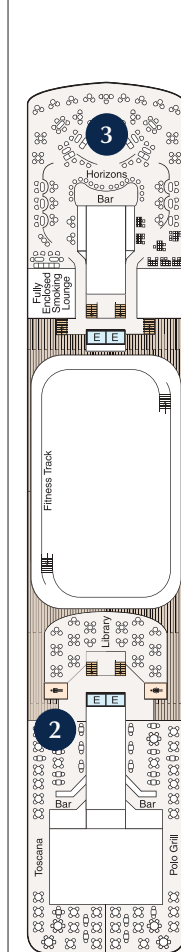
FORWARD



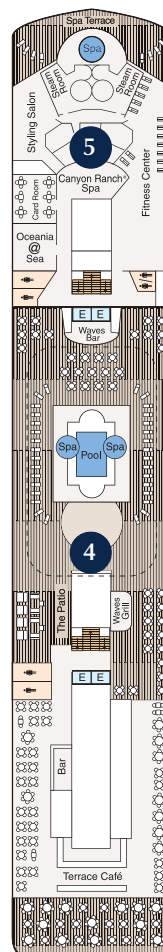
DECK 11

Note Deck 10: Red Ginger and Tuscan Steak available on board *Sirena*, replacing Polo Grill and Toscana.

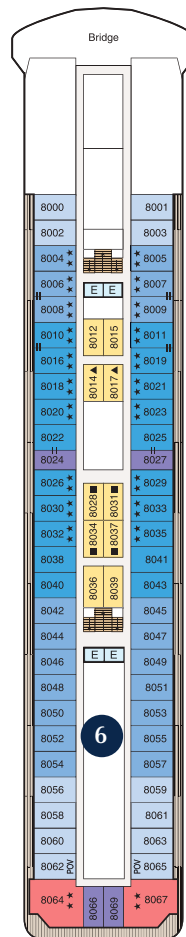
Artist Loft available on board *Insignia* world cruises.



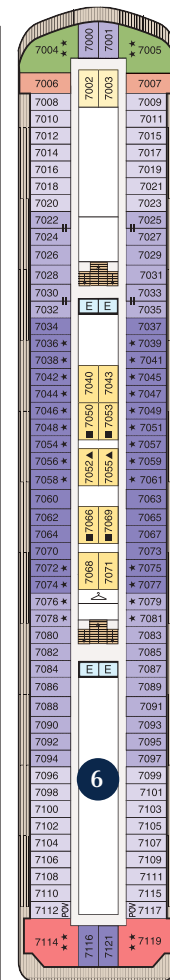
DECK 10



DECK 9



DECK 8



DECK 7

AFT

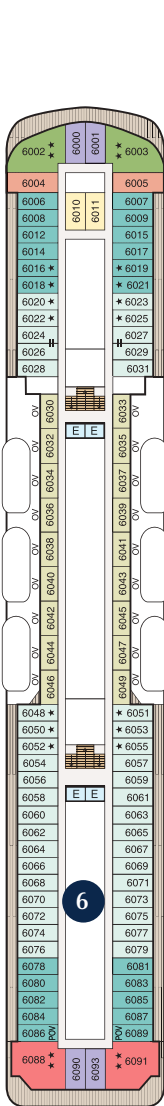
STATEROOM COLOUR LEGEND

OS	VS	PH1	PH2	PH3	A1	A2	A3
B1	B2	C1	C2	D	E	F	G

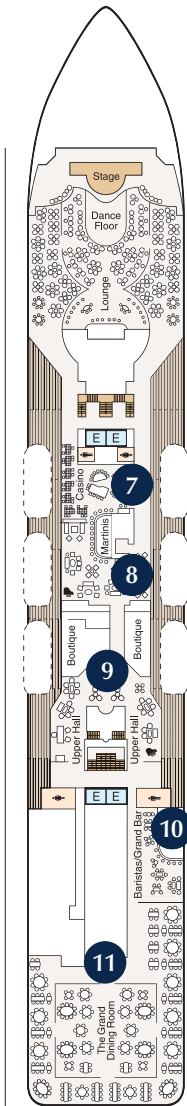
SYMBOL LEGEND

♣♣ Restrooms	POV Partially Obstructed Views
E Elevator	■ Quad with Pullman
Laundrette	★ ★ Quad with Sofabed
ov Obstructed Views	Connecting Staterooms

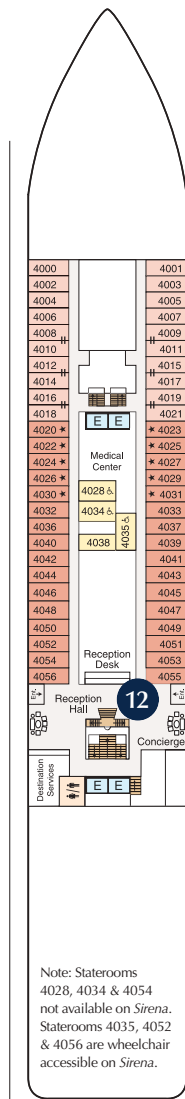
▲ Triple with Pullman
★ Triple with Sofabed
♿ Wheelchair Accessible/ ADA Compliant



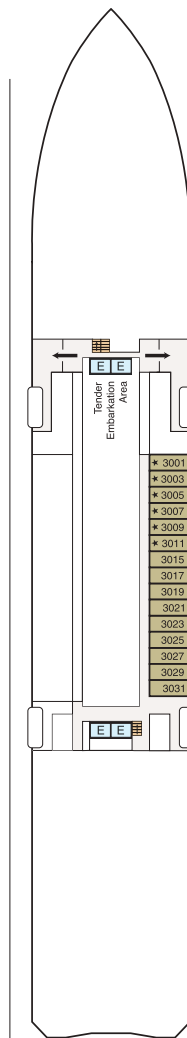
DECK 6



DECK 5



DECK 4



DECK 3

Note: Staterooms 4028, 4034 & 4054 not available on *Sirena*. Staterooms 4035, 4052 & 4056 are wheelchair accessible on *Sirena*.

FORWARD
AFT

RE-INSPIRED AREAS

DECK 11

1. Golf Putting Greens

DECK 10

2. Toscana
3. Horizons

DECK 9

4. Waves Bar | Waves Grill
5. Canyon Ranch® Spa

DECK 8 | 7 | 6

6. Suites & Staterooms
All Categories
All Public Areas

DECK 5

7. Casino
8. Martinis
9. The Upper Hall | Boutiques
10. Baristas | Grand Bar
11. The Grand Dining Room

DECK 4

12. The Grand Staircase
Lobby | Reception
Destination Services



OCEANIA CRUISES®
Your World. Your Way.®

VISIT [OCEANIANEXT.COM](https://oceanianext.com)
or CONTACT YOUR TRAVEL AGENT